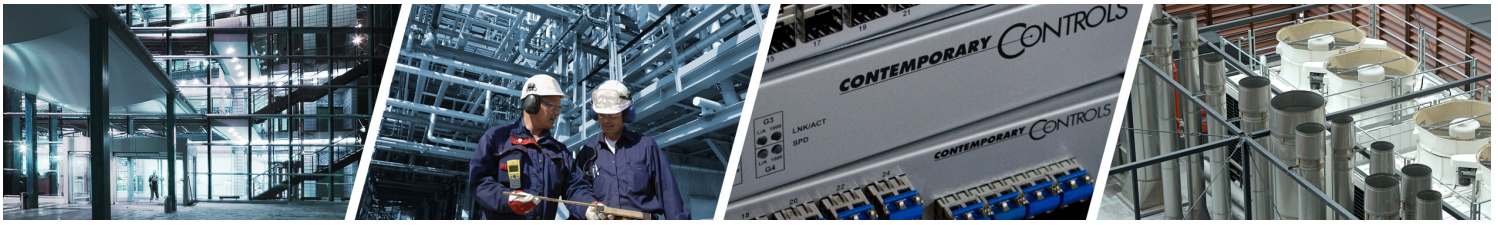


## Application Note – Upload a PDF to BASview3 Supervisory Graphical Interface



# Upload a PDF to BASview3 Supervisory Graphical Interface

BASview3 is a stand-alone, embedded, web-based graphical interface for building automation and process automation systems. It can be accessed from any web browser— providing supervisory functionality to any BACnet/IP or Modbus TCP system. Using Contemporary Controls BASrouter or BASgateway products provide support for additional protocols, such as BACnet MS/TP and Modbus RTU.

With the BASview3, current and historical values can be displayed on a user-defined screen as graphics or dashboards. Supervisory features include animated graphic screens, scheduling, historical trending, runtime accumulation, and email alarms. BASview3 will automatically toggle outputs and change setpoints on schedule, collect runtime and trend data, and monitor alarm conditions.

### BASview3 Graphics

Graphics allow you to create a set of custom webpages that contain animated views of the system along with real-time point values. You can also change the operation of the building in a graphical view. Graphics can be embedded in dashboards.

Graphics are fixed in size and can be uploaded as an animation (animated GIF), a button icon, an image (JPG, GIF, or PNG), or a label. PDF files can also be uploaded and viewed from a button on a BASview graphic. The BASview3 supports the functionality to upload and store PDF files via File Transfer Protocol (FTP).

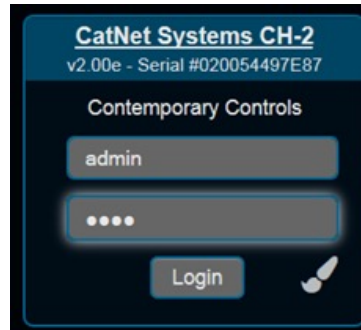
Animated icons can be standalone animated GIFs that animate when a point in the system is true, false, or at a specific level. They can be used with an image to animate part of the image. For example, you can upload an image of a floor plan, mechanical equipment, zone layout, and then position animated graphical elements, such as gauges, buttons, labels, charts, on top of the image. This gives users insight to zone temperature, zone set point, and gives some control, such as adjusting a setpoint or changing occupancy state.

Access to documentation and floor plans is helpful at the job site. This application note explains how to upload and store a PDF file via FTP.

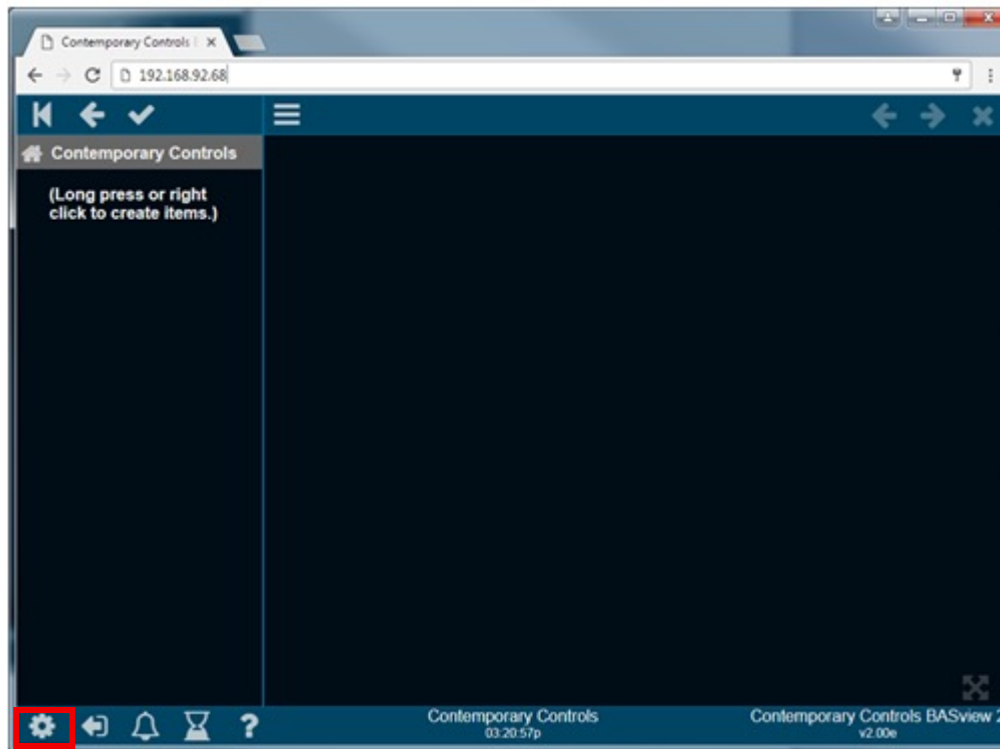


# Application Note – Upload a PDF to BASview3 Supervisory Graphical Interface

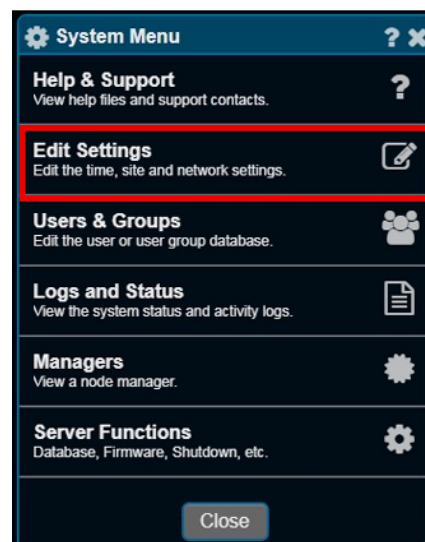
1. Login to the BASview  
(The BASview3's default IP address BASview is 192.168.92.68)



2. From the main webpage, select the **System Menu** gear icon from the toolbar (on the bottom left).



3. Select **Edit Settings**.
4. Select **Network Settings**.
5. Select **Port Settings**.



## Application Note – Upload a PDF to BASview3 Supervisory Graphical Interface

**NOTE:** The FTP access has its own username and password. The username is “catnet”. To configure the password, scroll down to the bottom to locate the FTP/Telnet password. The screen also provides the option to set the FTP and Telnet ports.

- Using an application such as FileZilla®, input your FTP settings—IP address, port number and authentication—and connect to the BASview3.

Return to the main webpage, select the **System Menu** gear icon from the toolbar (on the bottom left).

- Select **Logs and Status**.
- Select **System Status**.
- Save the PDF files in the folder:

**/home/catnet/catnet/data/config/userData/files**

The System Status screen displays how much space is being used by PDF files. While the system does not enforce a limit on space reserved for user files, it is recommended to keep at least 1 GB of free space available on the SD card.

- Return to the main webpage, and right-click in the device tree.
- Select **New Link** and enter the path for the PDF:

**http://[BASview\_IP\_address:HTTP\_port]/files/myFile.PDF**

For example, <http://192.168.0.50:8651/files/myFile.PDF>

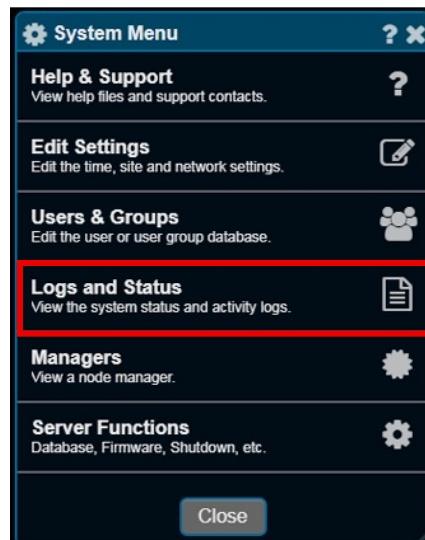
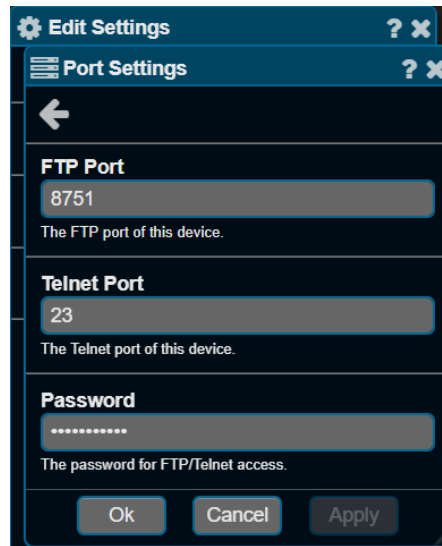
**NOTE:** The above example shows the webserver port of 8651, which is different than the FTP port. If the port number is 80, then delete the “:” and do not show the port number.

For example, <http://192.168.0.50/files/myFile.PDF>

- Drag and drop the file onto a button icon.

After pressing the button, the browser will show the PDF document. This will fill the entire browser view.

Refer to the [BASview3 User Manual](#) to learn more about creating graphics in the BASview3.



# Application Note – Upload a PDF to BASview3 Supervisory Graphical Interface

**United States**  
**Contemporary Control  
Systems, Inc.**

Tel: +1 630 963 7070  
Fax: +1 630 963 0109

[info@ccontrols.com](mailto:info@ccontrols.com)

**China**  
**Contemporary Controls  
(Suzhou) Co. Ltd**

Tel: +86 512 68095866  
Fax: +86 512 68093760

[info@ccontrols.com.cn](mailto:info@ccontrols.com.cn)

**United Kingdom**  
**Contemporary Controls Ltd**

Tel: +44 (0)24 7641 3786  
Fax: +44 (0)24 7641 3923

[ccl.info@ccontrols.com](mailto:ccl.info@ccontrols.com)

**Germany**  
**Contemporary Controls GmbH**

Tel: +49 341 520359 0  
Fax: +49 341 520359 16

[ccg.info@ccontrols.com](mailto:ccg.info@ccontrols.com)

[www.ccontrols.com](http://www.ccontrols.com)